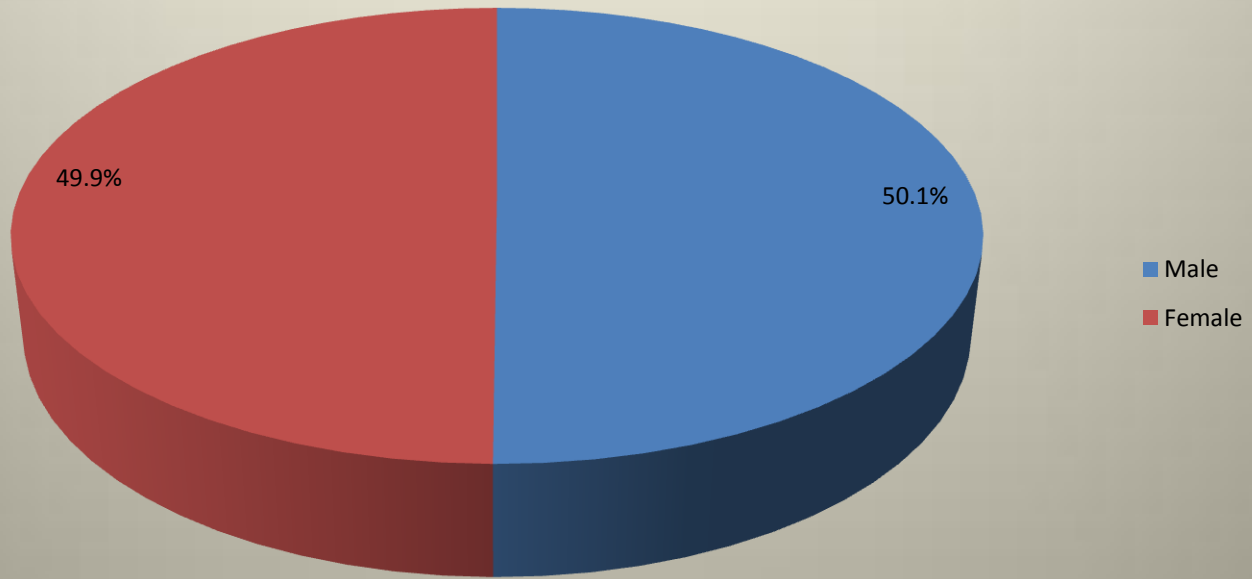
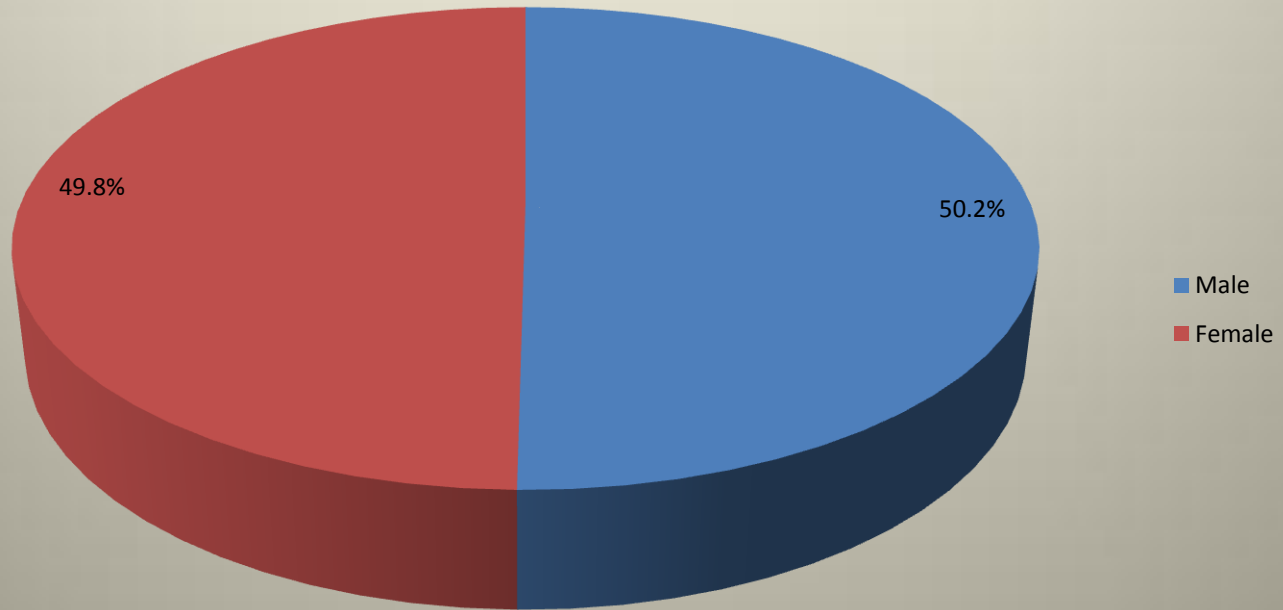


HTIC Statistics

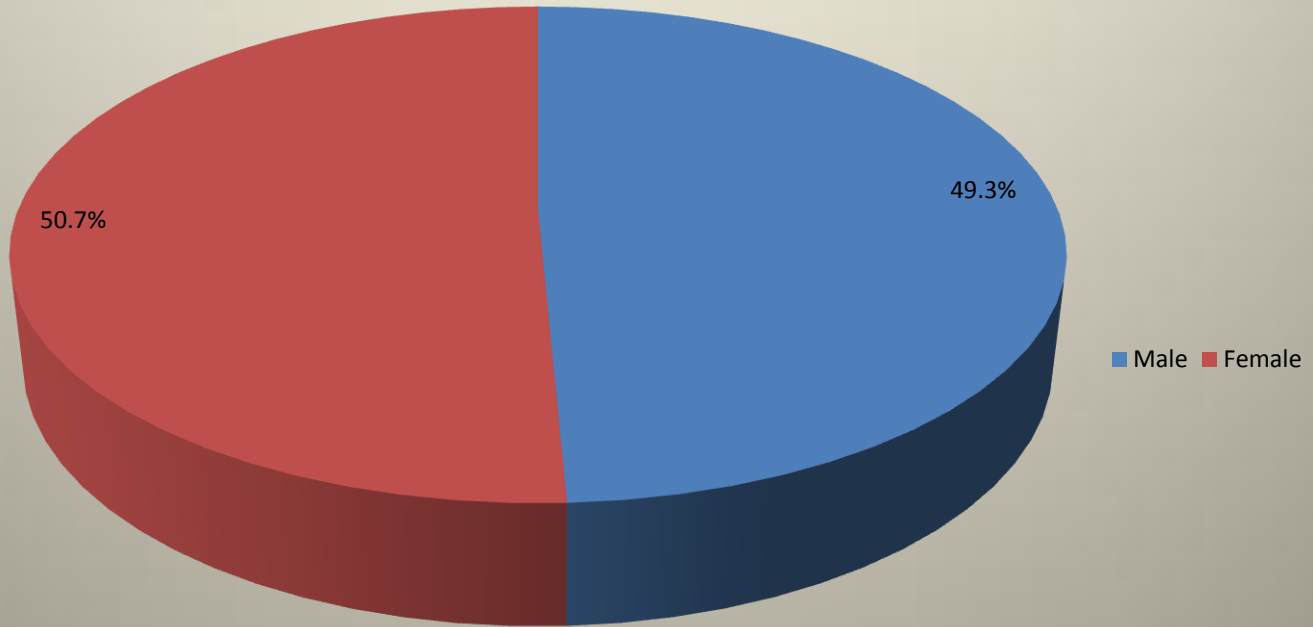
Student Demographics, Academic Year Fall '09 - Summer '10



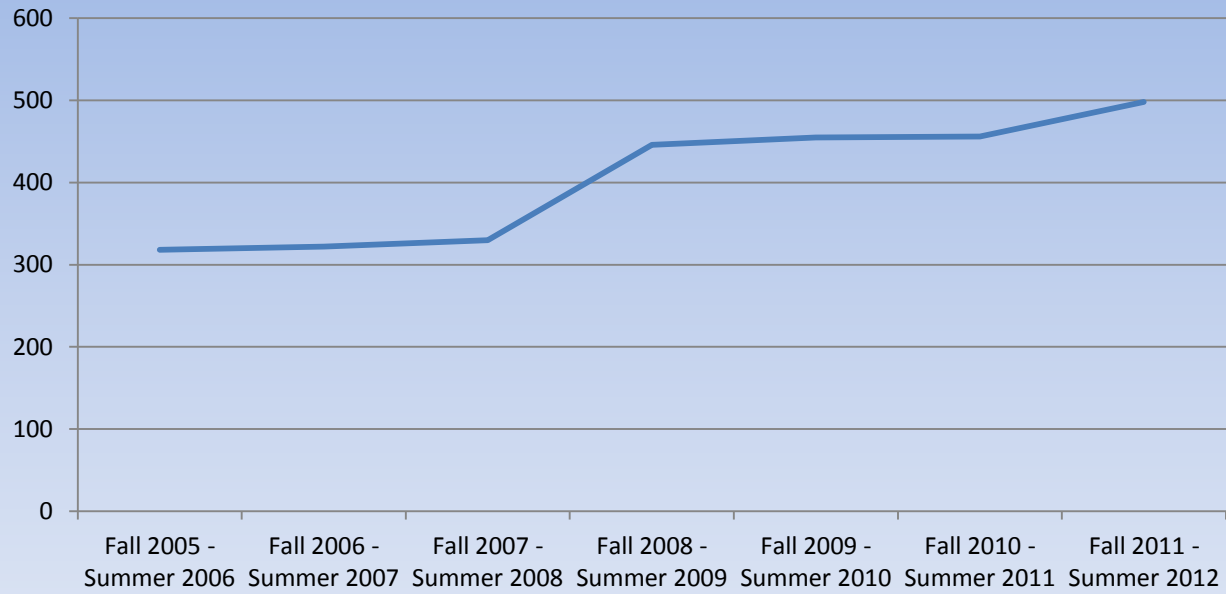
Student Demographics, Academic Year Fall '10 - Summer '11



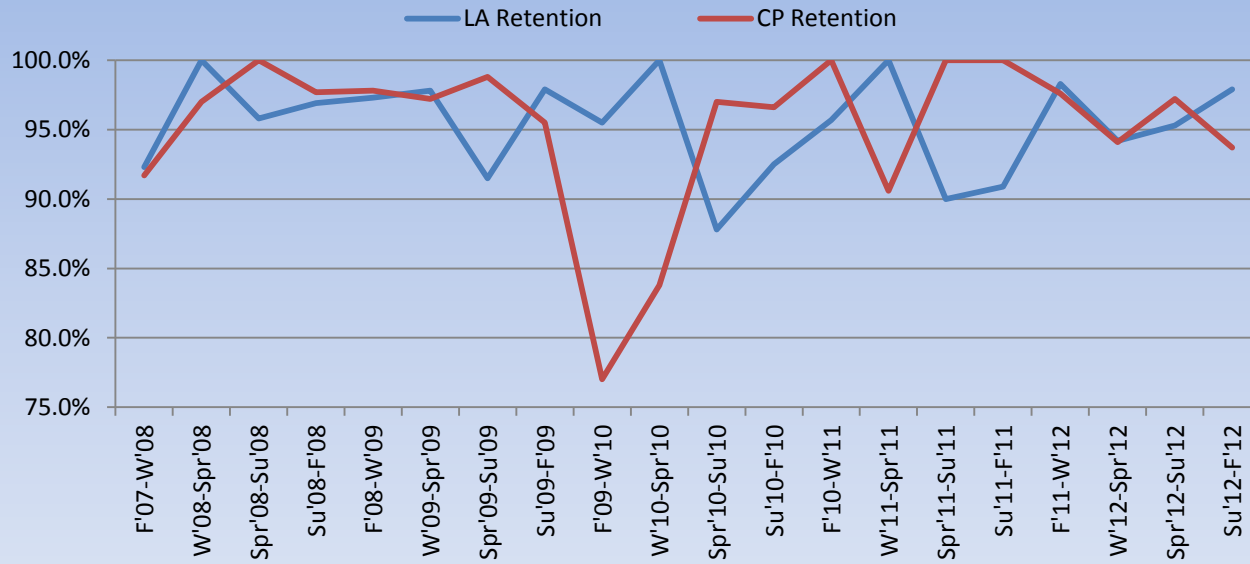
Student Demographics, Academic Year Fall '11 - Summer '12



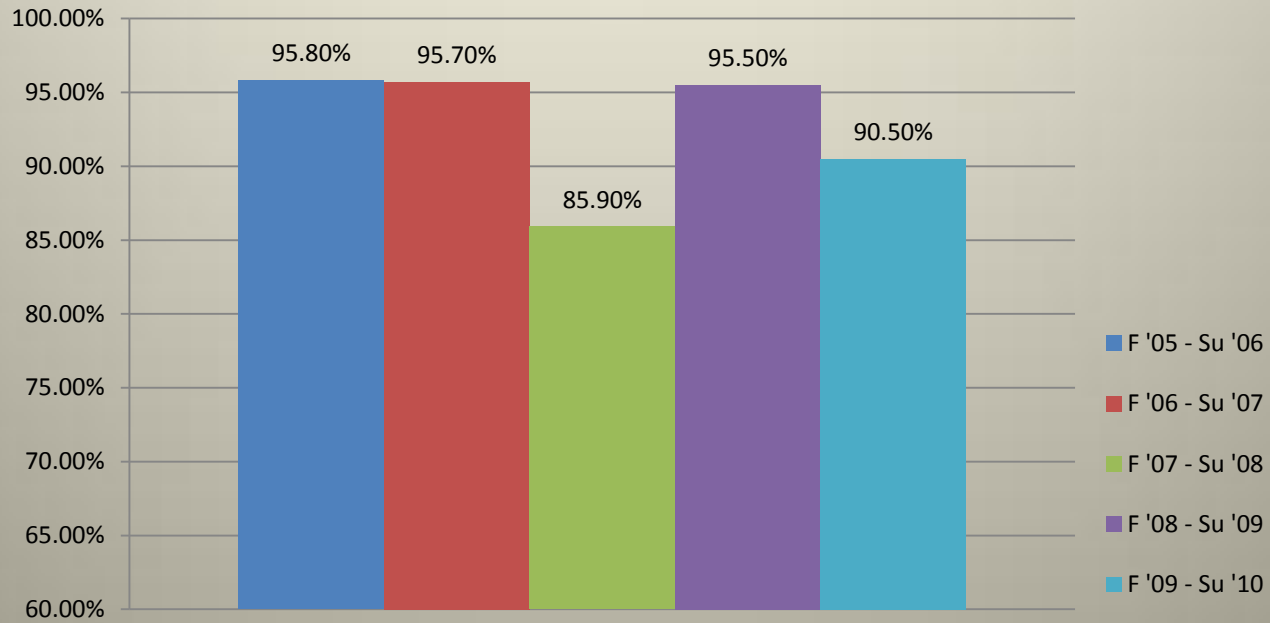
Liberal Arts and College Preparatory Programs: Total Combined Enrollment by Academic Year



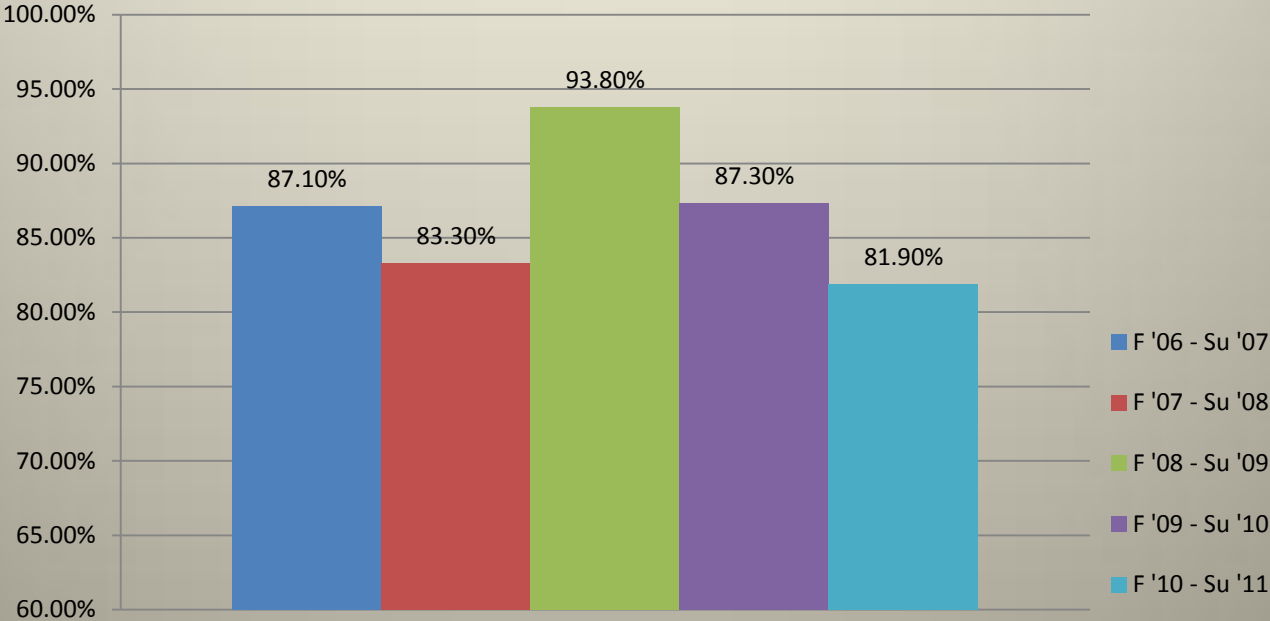
Liberal Arts & College Preparatory Program, Retention Rates



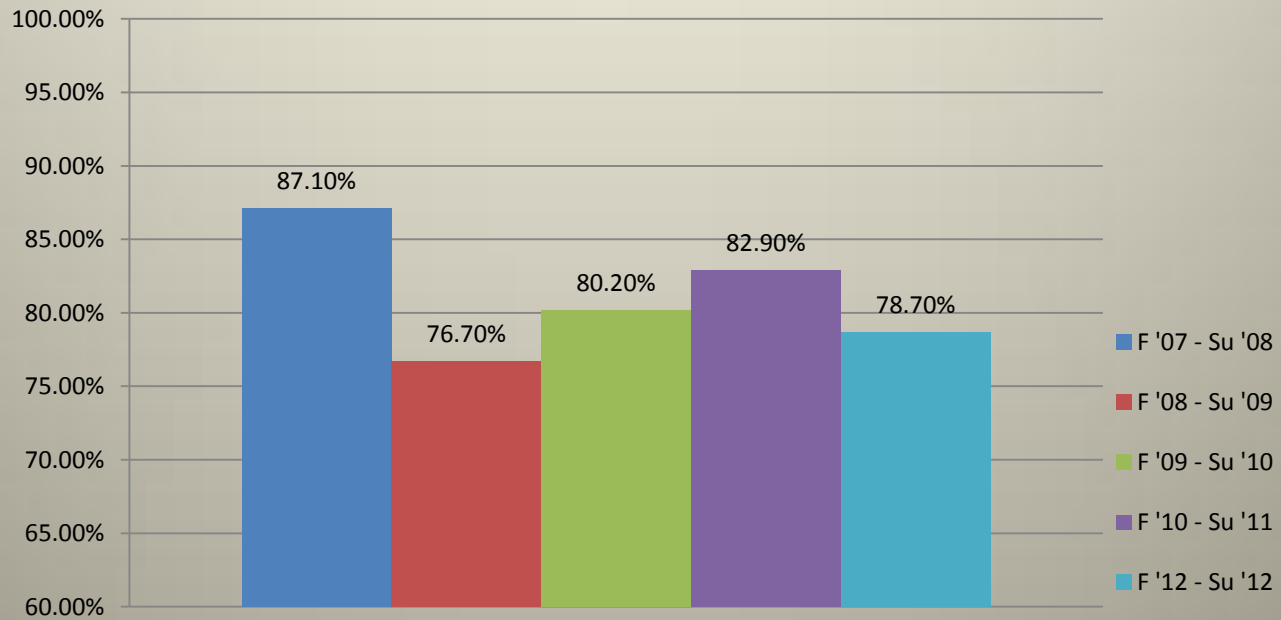
Liberal Arts Program Graduation Rates



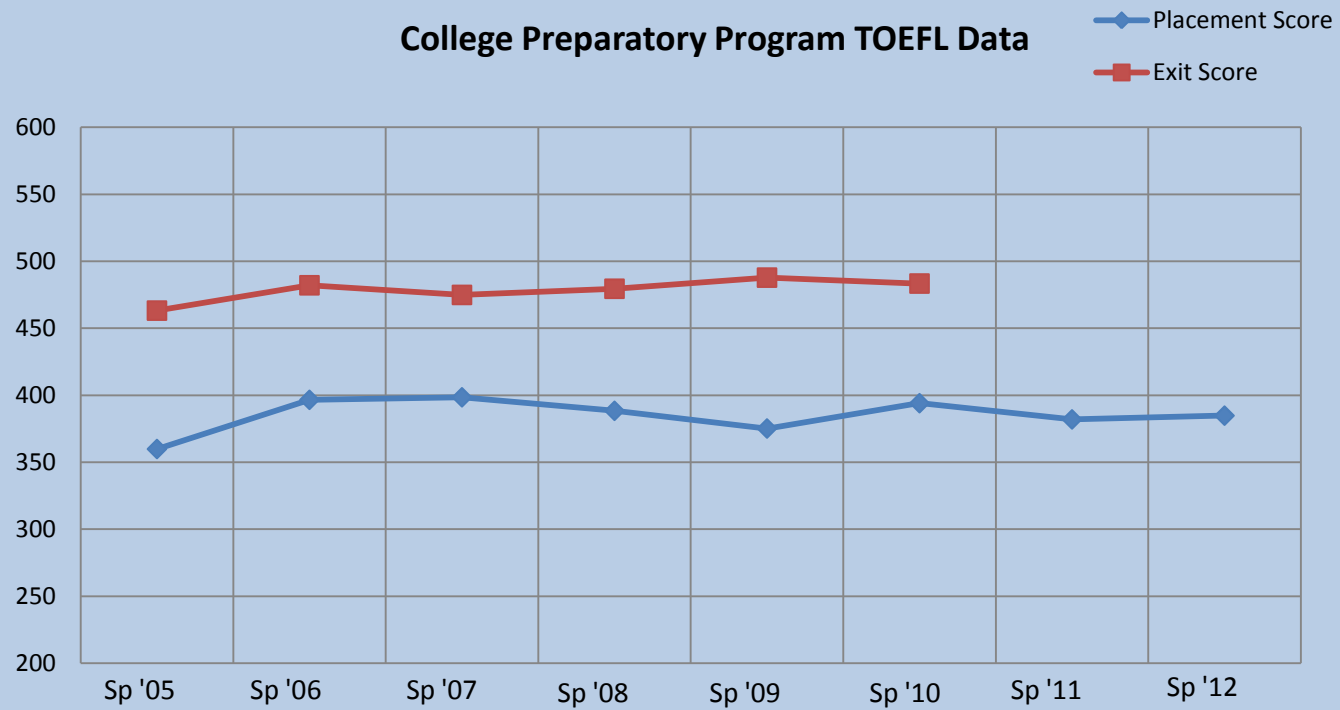
Rates for HTIC Graduates Transferring into Baccalaureate Programs



College Preparatory Program Completion Rates



College Preparatory Program TOEFL Data



Liberal Arts Program Student Citizenship by Enrollment Number

	Japan	USA	Taiwan	Korea	China	Mongolia
F '07 - Su '08	141	14	5	3	0	0
F '08 - Su '09	184	24	2	0	3	0
F '09 - Su '10	177	36	0	0	7	2
F '10 – Su '11	189	44	0	0	2	3
F '11 – Su '12	196	40	0	2	0	1

College Preparatory Program Student Citizenship by Enrollment Number

	Japan	USA	Taiwan	Korea	China	Mongolia
F '07 - Su '08	164	2	1	0	0	0
F '08 - Su '09	229	1	0	3	0	0
F '09 - Su '10	232	1	0	0	0	0
F '10 - Su '11	214	2	0	0	2	0
F '11 - Su '12	230	6	0	2	3	1

In the past 20 Years, HTIC has accepted students from these countries.

